



Clayton County 2023 Q4 Update

December 12, 2023

Collie Greenwood

General Manager/CEO

Agenda

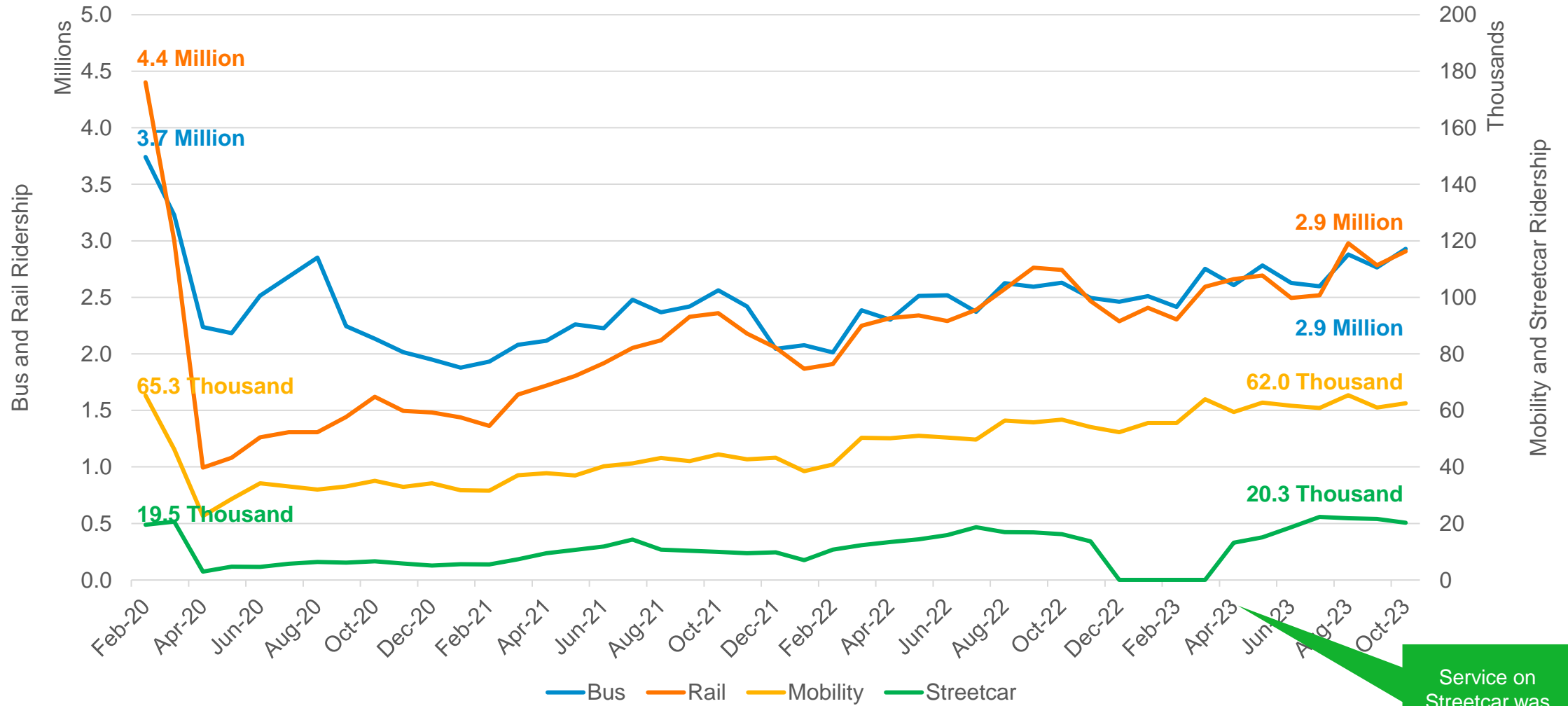
Operations Updates

MARTA 2040 Capital
Expansion



Operations Updates

MARTA Monthly Ridership by Mode February 2020 - October 2023



Service on Streetcar was temporarily suspended



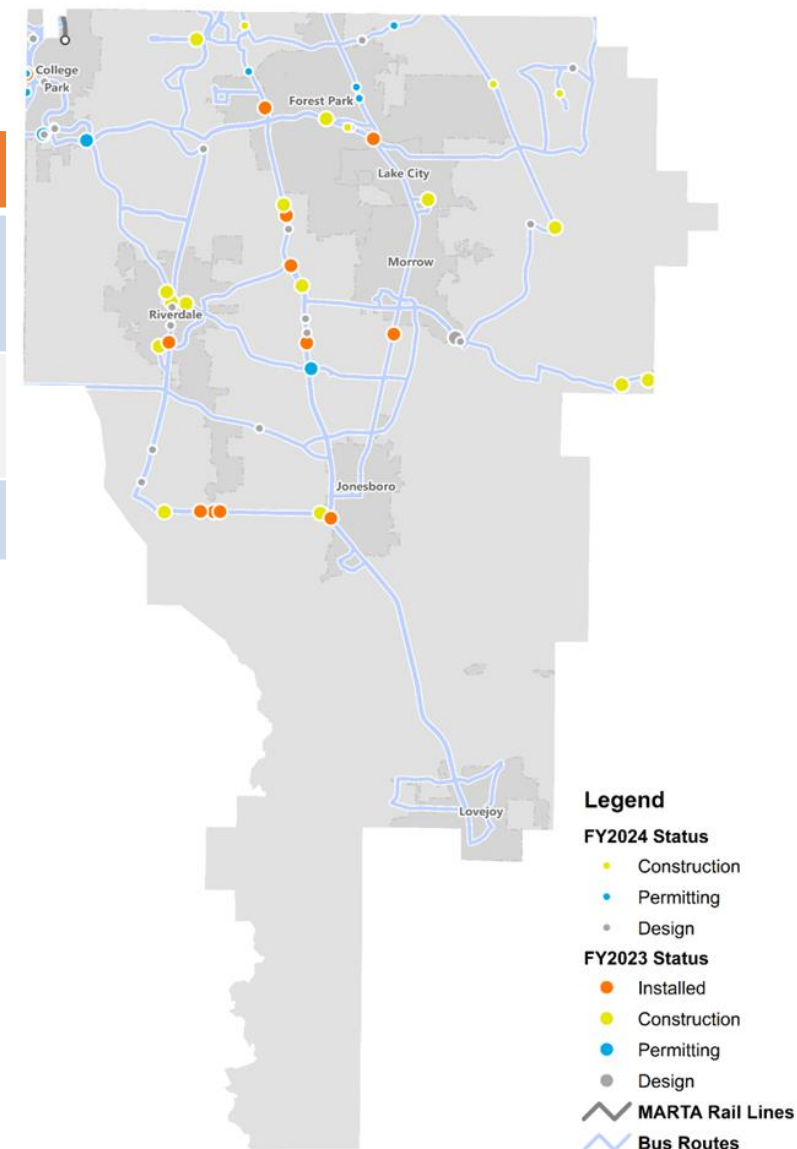
MARTA 2040 Capital Expansion

BUS SHELTERS & AMENITIES UPDATE

	FY20	FY21	FY22	FY23	FY24
Amenities Delivery Pre-COVID Estimate	30 amenities per year				
Amenities Delivered	29	9	25	30	57
TOTAL					150

While we are closing out FY23, MARTA has already started **57 amenities for the FY24** batch:

- ✓ 1 site installed
- ✓ 18 sites under construction
- ✓ 3 sites in permitting
- ✓ 35 sites in design



FY23 BUS STOP AMENITIES

213762 – Davidson Pkwy & Davidson Cir E



 **30** Weekday Boardings

Serves:

Royal Palms Inn,
Greater Church Atlanta,
and local businesses

Routes:

197-Battle Creek Road

BUS STOP IMPROVEMENT

- Commissioner Hambrick identified safety concern at a bus stop along Hwy 138 in Riverdale
- Addressed by relocating the stop and allowing patrons to wait further back from the street away from the barricades shown

Before:



After:



JUSTICE CENTER TRANSIT HUB UPDATE

Project Status:

- ✓ Final design will be completed Spring 2024
- ✓ Ongoing coordination with Clayton County to address short- and long-term safety between hub and jail visitation area
- ✓ IGA update on Commission agenda for approval

Projected Completion: 2026

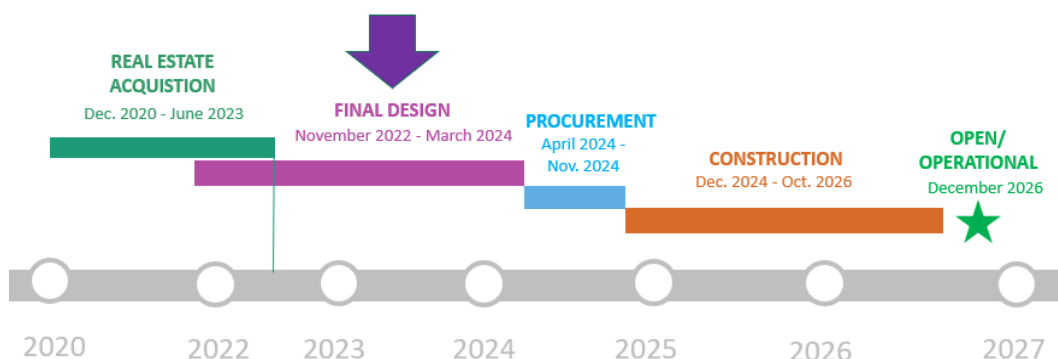


MULTI-PURPOSE OPERATIONS & MAINTENANCE FACILITY UPDATE

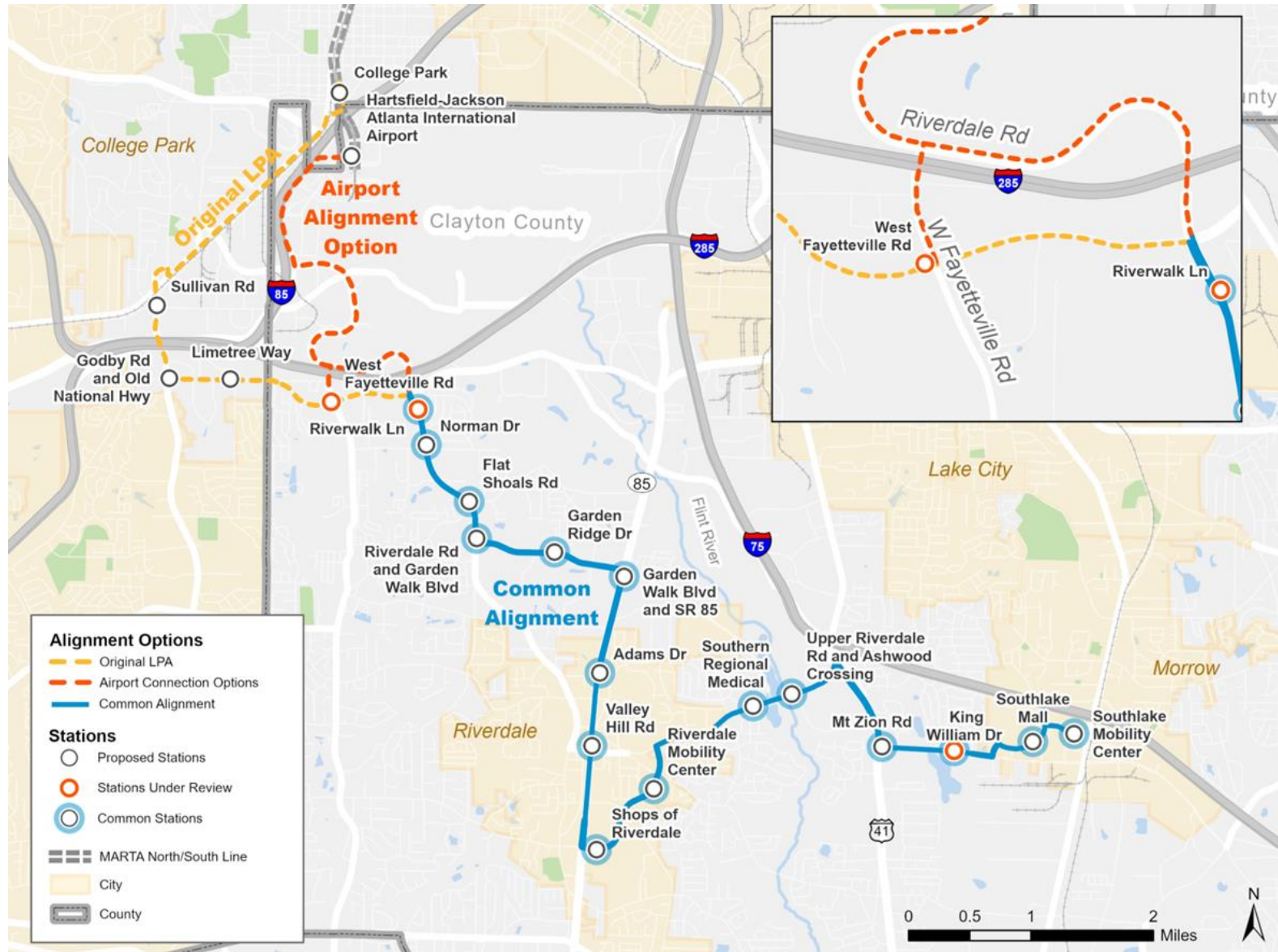
Project Status:

- ✓ 100% Demolition Plans complete
- ✓ 60% Plans complete
- ✓ Final design will be completed Q1 2024

Projected Completion: December 2026



MARTA RAPID SOUTHLAKE (BRT) UPDATE





MARTA RAPID SOUTHLAKE (BRT)



MARTA RAPID SOUTHLAKE (BRT) UPDATE

Criteria	LPA	Alternate 1	Alternate 2
Route Length <i>roundtrip</i> (mile)	11.3	8.4	8.4
Passenger Travel Time <i>roundtrip</i> (minutes)	24.03	12.33	13.59
Dedicated (%) from Norman Station to Terminus	8%	89%	91%
Segment Cost	\$14.6 m	\$55.7 m	\$57.4 m

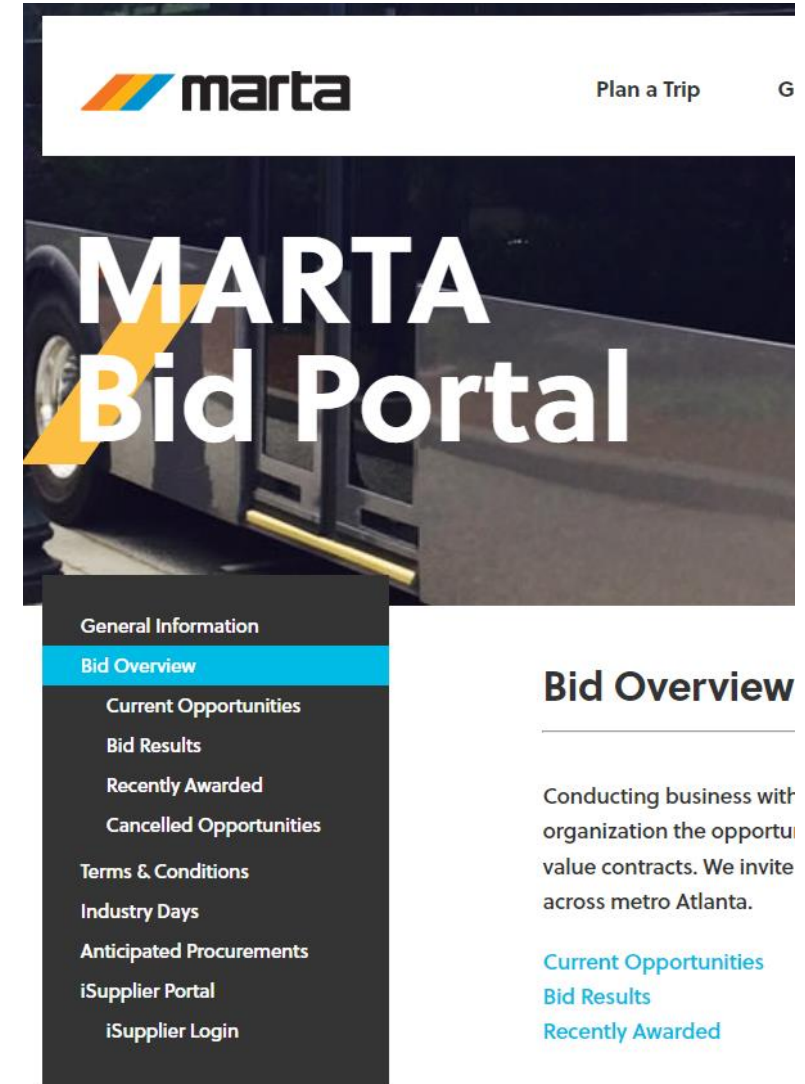
MARTA RAPID SOUTHLAKE (BRT) FINAL DESIGN

MARTA intends to procure an Architectural and Engineering consultant to provide final design services of the entire BRT alignment based on:

- ✓ **Segment 1** - South of I-285 with 30% to 100% design
- ✓ **Segment 2** - North of I-285 with two Options:
 - ✓ Option 1 to College Park Station, 30%-100% design
 - ✓ Option 2 to Airport 15%-100% (refining Alternates 1 & 2)

Procurement Process:

- ✓ **December 2023** - Board authorization to solicit
- ✓ **January 2024** - RFP advertisement
- ✓ **Selection/Board approval in Spring**

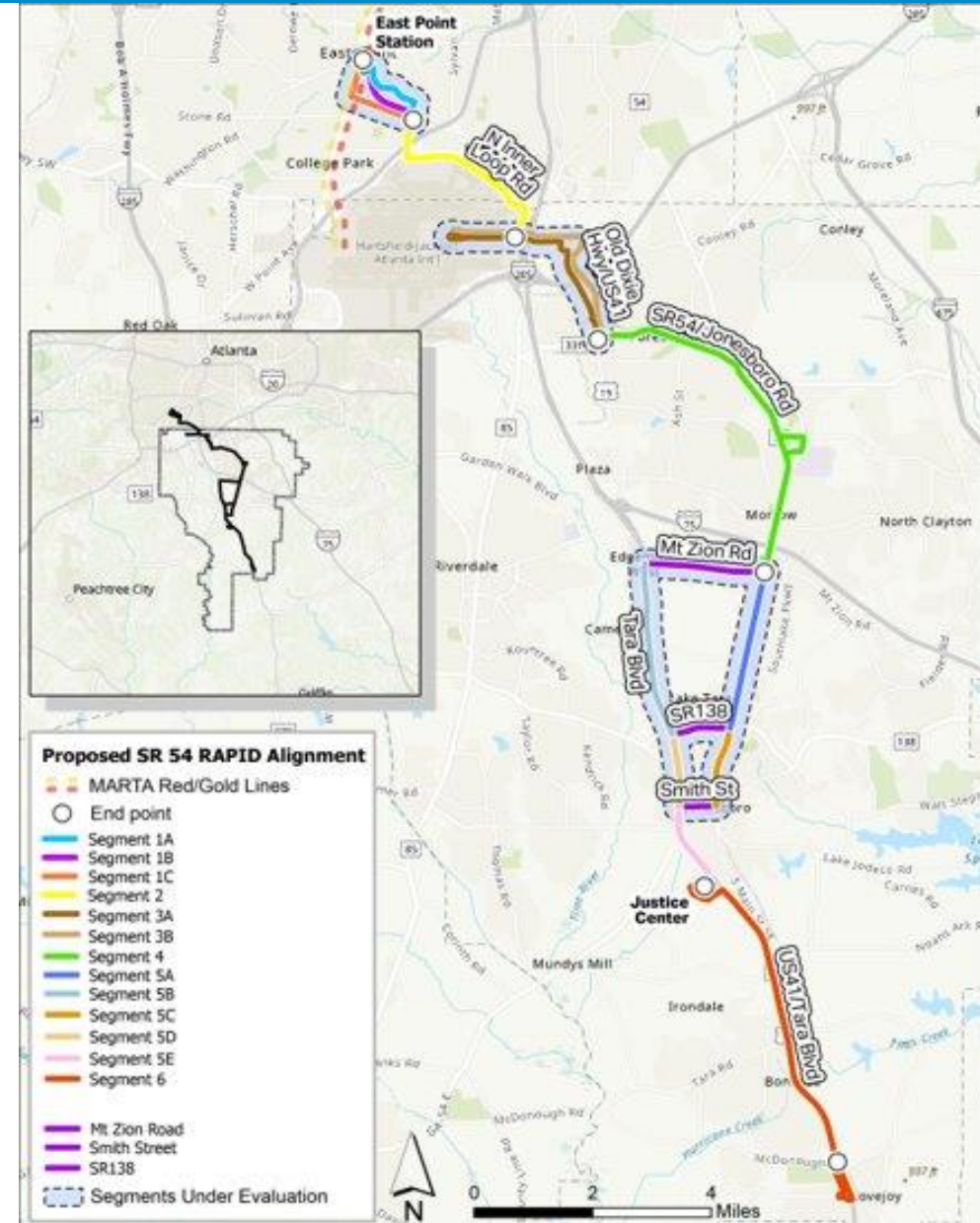


SR-54 BUS RAPID TRANSIT UPDATE

Project Status:

- ✓ Refining alignment concepts
- ✓ Assisting jurisdictions to adopt with Transit Supportive Land Use updates

Projected Service Start: 2030



RECENT EVENTS

- ✓ **9/6:** District 3 Goodr Mobile Grocery Giveaway and Reduced Fare Pop-Up
- ✓ **10/10:** Opportunity Clayton Retail & Commercial Economic Development Bus Tour
- ✓ **10/19:** Southlake BRT Airport Connection Stakeholder Briefing
- ✓ **11/14:** Goodr Mobile Grocery Giveaway #5
- ✓ **11/17:** Goodr Mobile Grocery Giveaway #6
- ✓ **12/4:** District 4 Goodr Mobile Grocery Giveaway and Reduced Fare Pop-Up

UPCOMING EVENTS

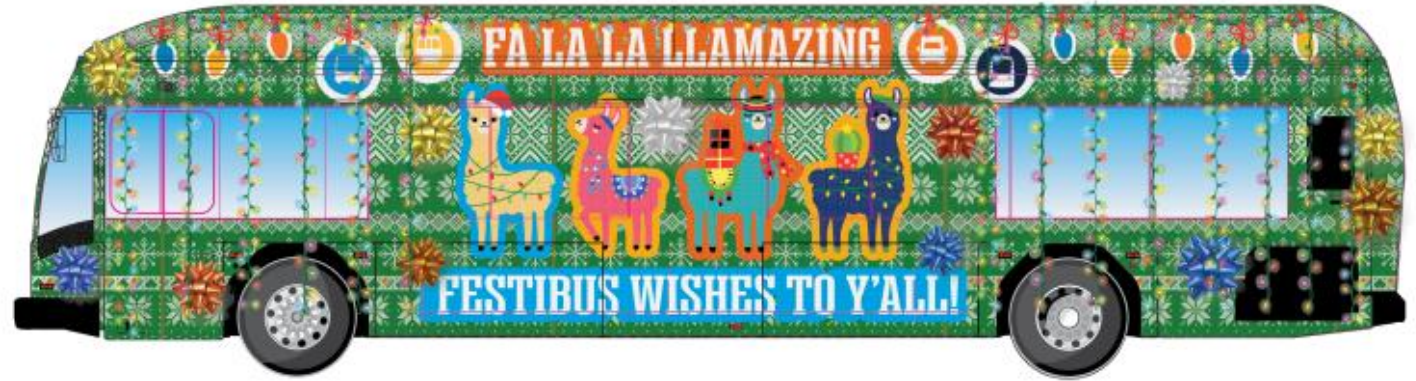
- ✓ **12/19-21:** MARTA Holiday Market Activities



'TIS THE SEASON'

Seasonal activities in Clayton County:

- ✓ A holiday wrapped bus
- ✓ Carolers at the Clayton County Transit Hub on December 12, 4:30-6:30 PM
- ✓ Bus customers will be surprised with holiday cheer and Breeze cards on select bus routes throughout the system





Thank You

